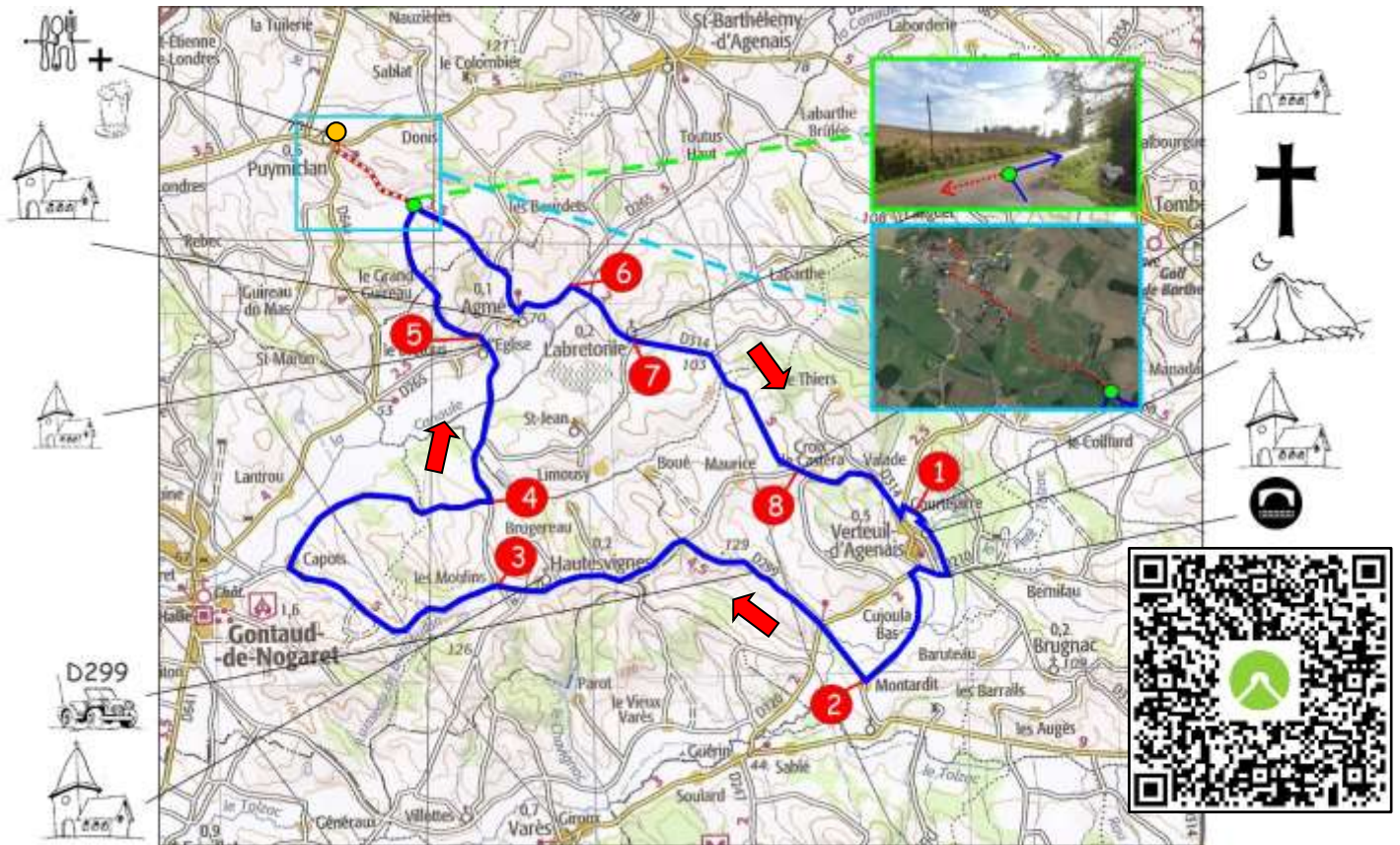




Bike ride - Agmé

distance : 34 km - height difference : 90 m - to climb : 485 m
departure : camping Charmant - gpx : ft-Agmé-34km



1. You leave the campsite via the Lindelaan (**Note: this is not the main entrance !**) - turn right at the asphalt - junction left (still asphalt for a while, later you follow a grass path along the Tolzac river) - turn right at the bridge - at the cemetery towards Gontaud de Nogaret - turn left at the D120 - 150 m further left towards C4 (direction Montardit) Route de l'escale - (junction after the mill keep right).
2. At the T-junction with priority sign, turn right - cross the intersection at the D120 straight ahead, continue following the D299 to Hautevignes - after the sign for the end of the built-up area at Hautevignes, at the junction at C1 Route de Gontaud, keep right.
3. Crossroads C5 straight ahead towards Gontaud de N. (D299) (ignore the junction on the left to Labaylenque) - 1st asphalt road with stop sign at Capot turn right towards Labretonie - T-junction at the Rieublanc sign turn right.
4. At the crossroads near Lavergne, turn left towards Labretonie (follow the bicycle sign) - after the bridge, straight ahead on V4 towards AGME.
5. Crossroads straight ahead towards Puymiclan - at T-junction (= ●)
 - For a drink and/or snack: **turn left** - Turn right at the stop sign at the T-junction - straight ahead at the intersection (follow the sign)
 - Restaurant Le Vieux Faitout (Mon-Fri 7:30 AM - 3:30 PM / Sat 8:30 AM - 2:30 PM / Closed Sundays)
 - Return to ● the intersection and straight ahead - turn left at the junction (direction Agmé - C1) - cycle straight ahead!
6. At the junction at the stop sign, turn right towards Labretonie.
7. Crossroads after church at telephone booth straight ahead towards Verteuil d'Agenais D314
8. At the junction at the cross, continue straight ahead until the T-junction in Verteuil d'Agenais D120 - turn left towards the campsite.